

Adjustable Pipe Roll Support Fig. 177

Size Range: 1" through 30"

Material: Cast iron roll and sockets; steel roll rod, continuous thread rods and hex nuts

Finish: Plain, Zinc Plated (Hot-Dip Galvanized optional) or Resilient Coated

Service: For support of pipe where longitudinal movement due to expansion and contraction will occur and where vertical adjustment up to 6" may be necessary.

Maximum Temperature: 400° F at roller, 300° F at Resilient coated roller.

Approvals: Complies with Federal Specification A-A-1192A (Type 41), WW-H-171-E (Type 42), ANSI/MSS SP-69 and MSS SP-58 (Type 41).

Installation: Normally used directly above steel beams, brackets angles, etc.

Features: Advantages of pipe rollers with a protective resilient coated covering.

- Non conductive pipe rollers – prevent the passing of current from pipeline to structure.
- Corrosion resistant – for protection against severe weather conditions, moderate corrosive conditions such as marine atmospheres and weather resistant to ultra-violet radiation.
- Low coefficient of friction between pipe and resilient coated pipe roller.

How to size:

1. If roll is to support bare pipe, select the size directly from nominal pipe size (see below).
 2. If used with pipe covering protection saddle, see Figure 160 to Figure 166A for size of pipe roll.
 3. If roll is to support covered pipe, the O.D. of the covering should not be greater than the O.D. of the pipe for which the roll was designed.
- Ordering:** Specify size of roll, figure number and name. Be certain to order oversized rolls when insulation and protection saddles makes this necessary.

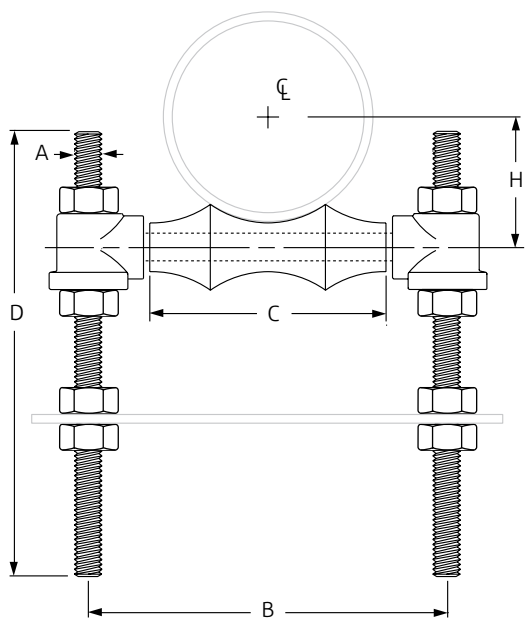
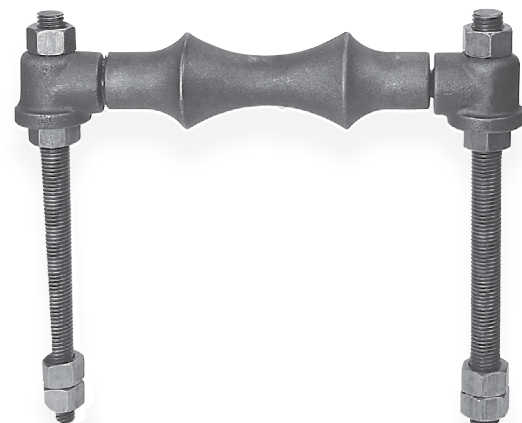


Fig. 177: Dimensions (in) • Weight (lbs)

Pipe Size	Weight	A	B	C	D	H
1	1.1		3	1½		1⅛
1¼	1.2	¾	3⅜	1⅞		1¼
1½	1.2		3⅝	2⅞		1⅜
2	1.3		4⅞	2⅝		1⅝
2½	2.3		4⅞	3⅞		1⅝⅞
3	2.4	½	5½	3¾		2¼
3½	2.7		6⅞	4¼	12	2⅞⅞
4	3.8	⅝	6⅞	4¾		2⅞⅞
5	4.7		8⅞	5⅞		3⅞
6	7.6	¾	9⅞	6⅞		4
8	11.0		11⅞	8⅞		5⅞
10	13.7	⅞	14⅞	11		6⅞
12	19.4		15⅞	12½		7⅞
14	31.2		17¾	14¼		8⅞
16	42.5	1	19¾	16¼		9⅞
18	46.6		21⅞	18¼	18	10½
20	66.2	1¼	24¼	20¼		11⅞
24	102.5		28⅞	24¼		14
30	186.8	1½	35½	30¼	24	17⅞

DI/CI Roll Sizing

DI/CI Pipe Size	Fig. 177 Roller Size
3	4
4	5
6	6
8	8
10	10
12	14
14	16
16	18
18	20
20	24
24	30
30	No Recom.

PROJECT INFORMATION	APPROVAL STAMP
Project:	Approved
Address:	Approved as noted
Contractor:	Not approved
Engineer:	Remarks:
Submittal Date:	
Notes 1:	
Notes 2:	